

sofamel

Product Technical Specifications

Mod. RJA

Reducer multi-voltage aluminium joint

Functionality

Aluminium joint for connections of **LOW** and **MEDIUM VOLTAGE** circuits. They are used in a wide range of sections, both for flexible and rigid copper cables in underground distribution networks.

Product Features

Manufactured by **HIGH CONDUCTIVITY ALUMINUM** casting with a purity equal to or greater than 99.5%. They carry neutral grease in both holes to avoid oxidation of aluminum.

These terminals are suitable for indoor and outdoor installations as long as any possible water inlet is sealed by tape or heat shrink, as could be the inspection hole and / or the remaining separation between terminal and cable once crimped.

The Sofamel terminals are marked with the Sofamel logo, conductor section.





Mod. RJA

Reducer multi-voltage aluminium joint

Raw Material Features

ALUMINIO

Aluminum type: **High purity aluminum (99.5% or higher)**.

Certified

According to the Standards:

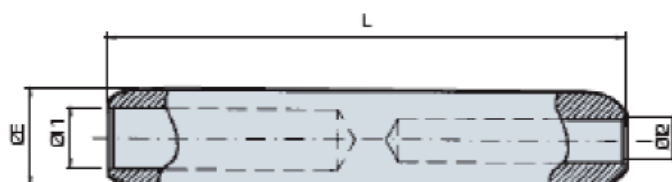
UNE 211024: Cable accessories. Elements of connection to be used in low and medium voltage underground distribution networks.

Electrical Features

CLASS A cable lug:

Connectors intended for the distribution of electricity or industrial networks, where they may be subjected to short circuits of relatively high intensity and duration. As a result, they adapt to most applications.

Dimensions



Ref.	Section Al.		Dimensions			
	1	2	ØE	Ø1	Ø12	L
RJ1A-50/25	50	25	20,0	9,0	6,5	106,5
RJ1A-95/50	95	50	20,0	12,5	9,0	106,5
RJ2A-150/50	150	50	25,0	15,5	9,0	133,0
RJ2A-150/95	150	95	25,0	15,5	12,5	133,0
RJ4A-240/95	240	95	32,0	19,5	12,5	143,5
RJ4A-240/150	240	150	32,0	19,5	15,5	143,5