

# sofamel

Product Technical Specifications

## Mod. TDC/A Bimetallic cable lug

### Functionality

Bimetallic cable lug for connections of **LOW** and **MEDIUM VOLTAGE** circuits. TDC/A bimetallic cable lugs are manufactured from aluminium alloy bars of equal or higher than 99.5% purity. The complete cable lug surface is tinned by electrolytic plating proceedings. It incorporates neutral grease to avoid aluminium oxidation. It is especially designed for overhead cable connections. These terminals must be crimped by **TRIPLE HEXAGONAL COMPRESSION**.

### Product Features

Manufactured by **HIGH CONDUCTIVITY ALUMINUM** casting with a purity equal to or greater than 99.5% with a tinned surface finish of 15 $\mu$  thickness to improve electrical contact and prevent oxidation.

It incorporates the neutral grease in the hole to avoid the oxidation of aluminum. Specially designed for connections with **Overhead** cable.

The Sofamel terminals are marked with the Sofamel logo and the driver's section.





## Mod. TDC/A

### Bimetallic cable lug

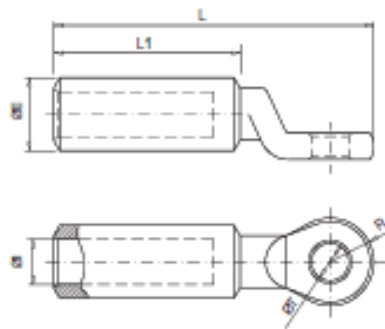
#### Raw Material Features

##### ALUMINUM

Aluminum type: **High purity aluminum (99.5% or higher).**

Surface treatment: **tin bath 15 $\mu$  thick.**

#### Dimensions



Código	Ref.	Sección (mm <sup>2</sup> )	Dimensiones (mm)						Kg x 100	Bolsa	Caja
			ØE	ØI	ØT	R	L1	L			
111200	TDC/A-30	LA-30	20,0	7,6	13,0	13,0	53,0	93,0	5,400	1	150
111205	TDC/A-54,6	LA-54,6	20,0	10,0	13,0	13,0	53,0	93,0	4,800	1	150
111210	TDC/A-56	LA-56	20,0	10,0	13,0	13,0	53,0	93,0	4,800	1	150
111220	TDC/A-78	LA-78	20,0	12,0	13,0	13,0	53,0	93,0	4,520	1	150
111225	TDC/A-80	LA-80	20,0	12,5	13,0	13,0	53,0	93,0	4,480	1	150
111230	TDC/A-110	LA-110	25,0	14,5	13,0	15,0	70,0	118,0	9,300	1	100
111240	TDC/A-180	LA-180	32,0	18,3	13,0	18,0	70,0	127,0	15,900	1	70