

sofamel

Product Technical Specifications

Mod. T

Copper cable lug



Functionality

Copper cable lug for connections of **LOW** and **MEDIUM VOLTAGE** circuits. They are used in a wide range of sections, both for flexible and rigid copper cables in underground distribution networks. These terminals must be crimped by **HEXAGONAL COMPRESSION** or by **PUNCHING COMPRESSION**.

Product Features

Manufactured from **ELECTROLYTIC COPPER** with a tinplated finish to improve electrical contact. Incorporates a central stop which facilitates the correct cable positioning.

These copper cable lugs are suitable for indoor and outdoor installations as long as any possible water inlet is sealed by tape or heat shrink, as could be the inspection hole and / or the remaining separation between terminal and cable once crimped.

Operating continuous temperature: 90 °C.



Mod. T

Copper cable lug

The Sofamel cable lugs are marked with the Sofamel logo and the section and the ØT.

The sections of this product can be from **1.5 to 630 mm²** and the blade drill can have measures of **4, 5, 6, 8, 10, 12, 14 and 16 mm**.

Raw Material Features

COPPER

Copper type: **99.9% electrolytic copper**.

Specific gravity: **8.95 gr/cm³**.

Conductivity at 20°C: **58.14 Siemens x m/mm²**.

Resistivity at 20°C: **0.0172 Ohms x mm²/m**.

Surface treatment: **tin bath 5µ thick**.

Electrical Features

CLASS A cable lug:

Connectors intended for the distribution of electricity or industrial networks, where they may be subjected to short circuits of relatively high intensity and duration. As a result, they adapt to most applications.

Certified

Short circuit tests, tensile mechanics, and electrical aging performed according to the Standard **IEC 61238-1**.

Comply with Directive **2002/95/EC** of the European Union (**RoHS**).



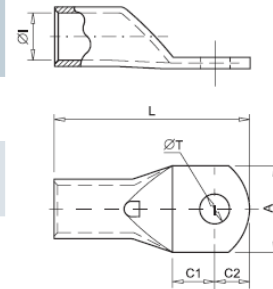


Mod. T

Copper cable lug

Dimensions:

Code	Ref.	Section (mm ²)		Dimensions (mm)						Kg x 100	Bag	Box
				ØI	L	ØT	A	C1	C2			
010100	T-1,5/4	4	4									
010110	T-1,5/5	5	5	1,8	18,0	4,3	8,7	5,0	4,0	0,074	100	3000
010120	T-1,5/6	6	6		18,5	5,3	8,7	5,0	4,5	0,071	100	3000
010130	T-2,5/4	4	4		20,0	6,4	11,0	6,0	5,0	0,081	100	2000
010140	T-2,5/5	5	5	2,7	18,0	4,3	8,7	5,0	4,0	0,111	100	2000
010150	T-2,5/6	6	6		19,0	5,3	8,7	5,5	4,5	0,112	100	2000
010160	T-2,5/8	8	8		20,0	6,4	9,0	6,0	5,0	0,110	100	1800
010170	T-4/4	4	4		24,0	8,3	12,0	8,0	7,0	0,128	100	1800
010180	T-4/5	5	5		21,0	5,3	8,7	5,0	4,5	0,168	100	1600
010190	T-4/6	6	6	3,3	21,0	5,3	8,7	5,0	4,5	0,163	100	1600
010200	T-4/8	8	8		23,0	6,4	11,0	6,0	5,5	0,171	100	1600
010210	T-6/4	4	4		26,5	8,3	14,0	8,0	7,0	0,179	100	1200
010220	T-6/5	5	5		23,0	5,3	10,3	6,0	5,0	0,204	100	1600
010230	T-6/6	6	6	3,8	23,0	5,3	10,3	6,0	5,0	0,202	100	1500
010240	T-6/8	8	8		24,0	6,4	10,3	6,0	5,5	0,200	100	1500
010260	T-10/5	5	5		27,0	8,3	14,0	8,0	7,0	0,208	100	1300
010270	T-10/6	6	6		25,5	5,3	11,9	6,0	5,5	0,364	100	1000
010280	T-10/8	8	8	4,7	27,0	6,4	11,9	7,0	6,0	0,361	100	1000
010290	T-10/10	10	10		30,0	8,3	15,0	8,0	8,0	0,388	100	800
010310	T-16/5	5	5		34,0	10,5	18,0	10,5	9,5	0,414	100	600
010320	T-16/6	6	6	5,6	26,5	5,3	11,9	6,0	5,0	0,465	100	700
010330	T-16/8	8	8		28,5	6,4	11,9	7,0	6,0	0,489	100	700
010340	T-16/10	10	10		31,0	8,3	15,0	8,0	7,5	0,500	100	600
010350	T-16/12	12	12		34,5	10,5	18,0	10,0	9,0	0,524	100	500
010360	T-25/6	6	6		38,5	13,0	20,0	12,0	11,0	0,552	100	500
010370	T-25/8	8	8		31,0	6,4	13,8	7,0	6,0	0,700	50	450
010380	T-25/10	10	10	7,1	34,0	8,3	15,0	8,5	7,5	0,742	50	450
010390	T-25/12	12	12		39,0	10,5	18,0	11,0	10,0	0,811	50	400
010410	T-35/6	6	6		41,0	13,0	21,0	12,0	11,0	0,793	50	300
010420	T-35/8	8	8		34,0	6,4	15,7	7,0	6,0	1,081	50	300
010430	T-35/10	10	10	8,7	38,0	8,3	15,7	9,0	8,0	1,165	50	300
010440	T-35/12	12	12		42,0	10,5	19,0	11,0	10,0	1,221	50	200
010450	T-35/14	14	14		44,0	13,0	21,0	12,0	11,0	1,231	50	200
010500	T-50/6	6	6		48,0	14,5	21,0	14,0	13,0	1,315	50	200
010510	T-50/8	8	8		41,0	6,4	17,9	8,0	7,0	1,570	20	200
010520	T-50/10	10	10		43,0	8,3	17,9	9,0	8,0	1,591	20	180
010530	T-50/12	12	12	9,8	47,0	10,5	20,0	11,0	10,0	1,706	20	160
010540	T-50/14	14	14		51,0	13,0	21,0	13,0	12,0	1,746	20	160
010550	T-50/16	16	16		53,0	14,5	25,0	14,0	13,0	1,793	20	140
010550	T-50/16	16	16		55,0	16,5	26,0	15,0	14,0	1,771	20	140



Code	Ref.	Section (mm ²)		Dimensions (mm)						Kg x 100	Bag	Box
				ØI	L	ØT	A	C1	C2			
010570	T-70/8	8	8									
010580	T-70/10	10	10	11,5	47,0	8,3	21,5	9,0	8,0	2,385	20	120
010590	T-70/12	12	12		51,0	10,5	21,5	11,0	10,0	2,510	20	120
010600	T-70/14	14	14		53,0	13,0	21,5	12,0	11,0	2,504	20	120
010610	T-70/16	16	16		58,0	14,5	25,0	15,0	13,0	2,698	20	100
010630	T-95/8	8	8		59,0	16,5	26,0	15,0	14,0	2,617	20	100
010640	T-95/10	10	10		52,0	8,3	24,7	10,0	9,0	3,354	20	80
010650	T-95/12	12	12	13,5	55,0	10,5	24,7	11,0	11,0	3,387	20	80
010660	T-95/14	14	14		57,0	13,0	24,7	12,0	12,0	3,468	20	80
010670	T-95/16	16	16		61,0	14,5	24,7	15,0	13,0	3,622	20	80
010690	T-120/8	8	8		64,0	16,5	27,0	16,0	15,0	3,690	20	80
010700	T-120/10	10	10		56,0	8,3	28,9	10,0	9,0	5,357	10	60
010710	T-120/12	12	12	15,6	58,0	10,5	28,9	11,0	10,0	5,452	10	60
010720	T-120/14	14	14		63,0	13,0	28,9	14,0	12,0	5,800	10	60
010730	T-120/16	16	16		67,0	14,5	28,9	16,0	14,0	6,068	10	60
010750	T-150/10	10	10		71,0	16,5	28,9	17,0	16,0	6,296	10	60
010760	T-150/12	12	12		69,0	10,5	30,4	13,0	11,0	7,125	10	50
010770	T-150/14	14	14	16,5	75,0	13,0	30,4	16,0	14,0	7,749	10	50
010780	T-150/16	16	16		79,0	14,5	30,4	18,0	16,0	7,891	10	50
010800	T-185/10	10	10		79,0	16,5	30,4	18,0	16,0	7,694	10	40
010810	T-185/12	12	12		80,0	10,5	34,0	13,0	11,0	9,842	10	40
010820	T-185/14	14	14	18,8	80,0	13,0	34,0	16,0	14,0	10,447	10	40
010830	T-185/16	16	16		84,0	14,5	34,0	18,0	16,0	10,991	10	40
010850	T-240/10	10	10		85,0	16,5	34,0	18,0	17,0	10,831	10	40
010860	T-240/12	12	12		82,0	10,5	38,4	14,0	12,0	12,466	5	25
010870	T-240/14	14	14	21,2	86,0	13,0	38,4	16,0	14,0	12,916	5	25
010880	T-240/16	16	16		90,0	14,5	38,4	18,0	16,0	13,352	5	25
010900	T-300/12	12	12		91,0	16,5	38,4	18,0	17,0	13,198	5	25
010910	T-300/14	14	14	23,4	93,0	13,0	41,7	16,0	14,0	15,780	5	15
010920	T-300/16	16	16		94,0	14,5	41,7	16,0	15,0	17,249	5	15
010940	T-400/12	12	12		100,0	16,5	41,7	19,0	18,0	18,161	5	15
010950	T-400/16	16	16	26,8	110,0	13,0	47,8	21,0	19,0	24,560	5	10
010960	T-400/20	20	20		110,0	16,5	47,8	21,0	19,0	24,246	5	10
010980	T-500/16	16	16		116,0	21,0	47,8	24,0	22,0	25,010	5	10
010985	T-500/20	20	20	29,8	115,0	16,5	54,8	22,0	19,0	42,990	1	9
010988	T-630/16	16	16		120,0	21,0	54,8	24,0	22,0	46,702	1	9
010990	T-630/20	20	20	34,5	128,0	16,5	64,4	22,0	19,0	66,260	1	5
010990	T-630/20	20	20		134,0	21,0	64,4	24,0	23,0	68,680	1	5

Datos sujetos a cambios
September 21, 2023

© 2017 Sofamel SLU
Todos los derechos reservados.

Versión: R2-7.2 COM01

Las especificaciones están sujetas a cambios sin previo aviso.



Thomas Alva Edison, 16-17 - Pol. Industrial Plans d'Arau - 08787 La Pobla de Claramunt (Barcelona) - Spain
Tel. +34 93 808 79 80 - Info@sofamel.es

www.sofamel.com