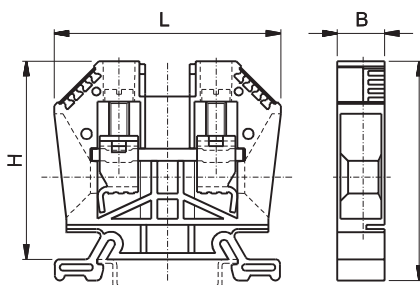
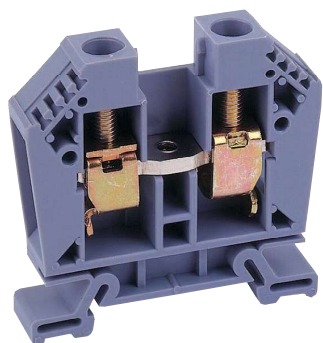


## EURO 16-25/35

PER/for TS35x7,5 EN 60715








## 43403

Sezione nominale 16-25 mm<sup>2</sup> / Rated cross-section 16-25 mm<sup>2</sup>  
 Pz. conf: 25 / Qty. p.pck: 25

Art. 43403		grigio/grey
Art. 43403 BL		blu/blue
Art. 43403 E		giallo-verde/green-yellow
Art. 43403 N		giallo/yellow

## APPROVAZIONI

Approvals

SEV		800V 101A 25 mm <sup>2</sup>
	KEMA	II 2 GD EEx e II O3ATEX2118 U 750V 16-25 mm <sup>2</sup>
RINA		800V 101A 25 mm <sup>2</sup>
VDE		800V 101A 25 mm <sup>2</sup> IEC 947-7-1
UL		600V 85A AWG: 14-4 FW 2
CSA		600V 85A AWG: 14-4

DATI TECNICI  
TECHNICAL DATA

Corpo isolante: Poliammide 6.6  
 Plastic body: Polyamide 6,6

Barretta: Ottone nichelato  
 Internal bus: Nickel plated brass

Massello: Acciaio, zincato  
 e cromatizzato  
 Clamp: Hardened steel, electroplated  
 with zinc chromated

Viti: Acciaio, zincate  
 e cromatizzate  
 Screws: Steel, zinc plated and chromated

Tratto da spellare: 14 mm  
 Stripping length: 14 mm

Momento torcente: Max 3.0 Nm  
 Tightening torque: Max 3.0 Nm

Identificazione: a 4 posti su ambo i lati  
 Marking: 4 slots on both sides

Spessore (B): 12 mm  
 Width (B): 12 mm

Lunghezza (L): 56 mm  
 Length (L): 56 mm

Altezza (H): 49 mm  
 Height (H): 49 mm

Imbocco: 7 x 7.4 mm  
 Opening: 7 x 7.4 mm

Filettatura viti: M 5  
 Screw thread: M 5

Filettatura centrale: M 4  
 Central thread: M 4

Resistenza alle correnti  
 superficiali:  
 Tracking resistance:  
 IEC 112: CTI >600  
 VDE 0303: KB >600

CAPACITÀ DI CONNESSIONE  
CONNECTING CAPACITY

## EURO 16-25/35

Conduttori rigidi  
 Rigid conductors mm<sup>2</sup> 1.5-25

Conduttori flessibili  
 Flexible conductors mm<sup>2</sup> 2.5-25

Conduttori con puntalini  
 Conductors with ferrules DIN 46288/1  
 mm<sup>2</sup> 1.5-25

AWG  
 AWG 14-4

Calibri  
 Gauges B7

Numero di conduttori collegabili  
 Number of connectable conductors 2x10 mm<sup>2</sup>