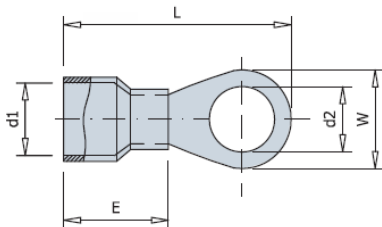


# sofamel

Product Technical Specifications

## Mod. AT

Insulated ring terminal



## Functionality

The cylinder or tube end of the crimp is a hollow tube where the multi-row cable is inserted and crimped. The connection or contact end is a flat ring with a central hole that connects to a captive screw or bolt.

Used in: Electrical panels terminal blocks wiring harnesses.

## Product Features

THE AT pre-insulated terminals are made of electrolytic copper strap and PVC insulation.

DIN 46237 color coding is the most popular type of crimp terminal. Color encoding is used to indicate a cable size.

- Red from 1.5 mm<sup>2</sup> to 2.5 mm<sup>2</sup> -
- Yellow from 2.5 mm<sup>2</sup> to 4 mm<sup>2</sup>
- Blue from 4 mm<sup>2</sup> to 6 mm<sup>2</sup>

Heat resistance is -10 to 75°C.

Insulating material with flame retardant additives.

Operating continuous temperature: 90 °C.



## Mod. AT

### Insulated ring terminal

---

#### Raw Material Features

**Driver:** H62 / C28000 Brass Strip

**Copper Sleeve:** Copper Tubular T2/C11000

**Insulation:** PVC, halogen free

**Finish:** Tinned

#### Certified

They comply with European Union Directive 2015/863/EU (RoHS 3).

Quality tests according to UNE 21021.

UL 486.

#### Electrical Features

The maximum intensity will depend on the section of the cable used, if it is ventilated it will withstand more current